



# St Brigid's School Newsletter

57 Bayfield Road, Dunedin 9013

Phone: 454 3477

Email: [office@stbrigidsdn.school.nz](mailto:office@stbrigidsdn.school.nz)

**Kōrero Mai, Kōrero Atu, Mauri Tū, Mauri Ora – Speak Up, Stand Together, Stop Bullying!**  
**Tomorrow is Pink Shirt Day - Friday 16 May. Wear Pink to promote kindness and inclusion.**

Talofa lava!

Thank you for joining us on Tuesday for our Maths Curriculum Night. It was a fantastic opportunity to learn more about how maths is taught at St Brigid's and to get a glimpse into how it looks in our classrooms.

This week is Staff Appreciation Week, and I would like to take a moment to thank our incredible staff for all they do. We are so lucky to have such a dedicated and caring team at St Brigid's School. Their commitment, passion, and mahi make a real difference in the lives of our tamariki

As part of our school's strategic goals, we've been working on strengthening our Physical Education programme and making our playground a more engaging space for active play. New games and improved areas continue to be developed for tamariki to enjoy during break times. In addition to our classroom programmes, all classes are taking part in school-wide PE sessions every Wednesday, led by our wonderful teachers. On Fridays, our Physical Activity Leaders (PALs) step up to lead the way—helping build confidence, leadership, and a love of movement across the school.

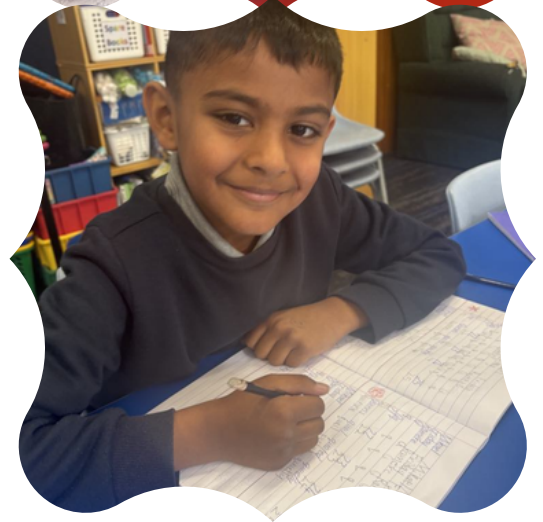
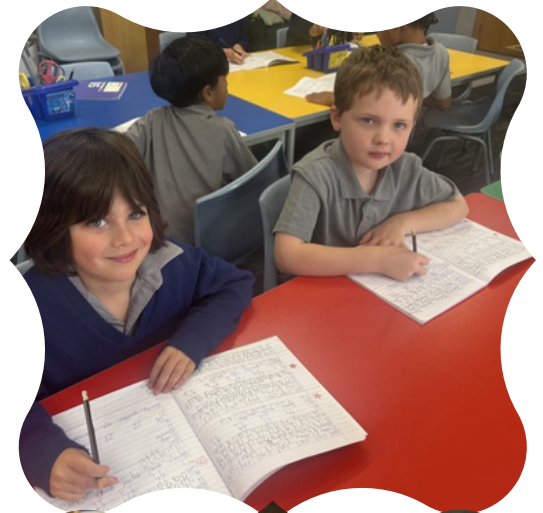
In the classroom, all teachers are working with the refreshed New Zealand Curriculum. A key focus is helping children understand what they are learning and why. Learning intentions and success criteria are used across all classes to help students see their progress and understand what success looks like.

We look forward to seeing all of our school families at school mass on Sunday the 18<sup>th</sup> May 9:30 am at Mercy Parish.

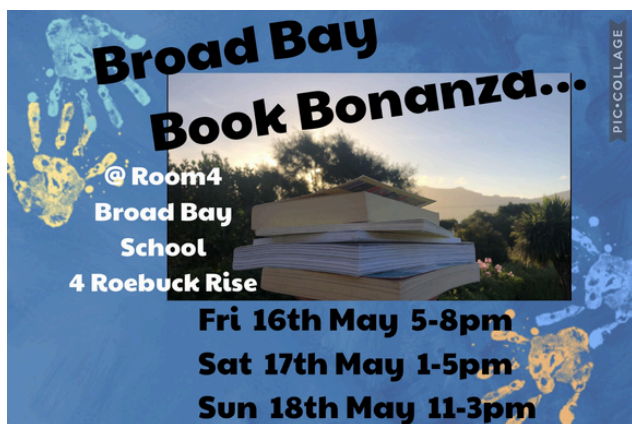
Teenaka Kennedy



**As Pope Leo begins his new role. We hold him in our hearts and prayers as he begins his journey of service.**







## Thermal Thursday

During Terms Two and Three, children are welcome to bring a heat-up lunch to school. Lunches must be fully cooked at home and brought in tin foil or a paper bag, with your child's name clearly written on it.

We'll warm lunches in our pie warmer, so students can enjoy a nice, toasty meal during the colder months.

Please note: this is a reheating service only – food must be pre-cooked before being brought to school.



Last week we were fortunate to host Bob, who shared his knowledge of traditional Māori instruments. The children were fascinated by the unique sounds and stories behind these taonga—it was a wonderful cultural learning experience for all.

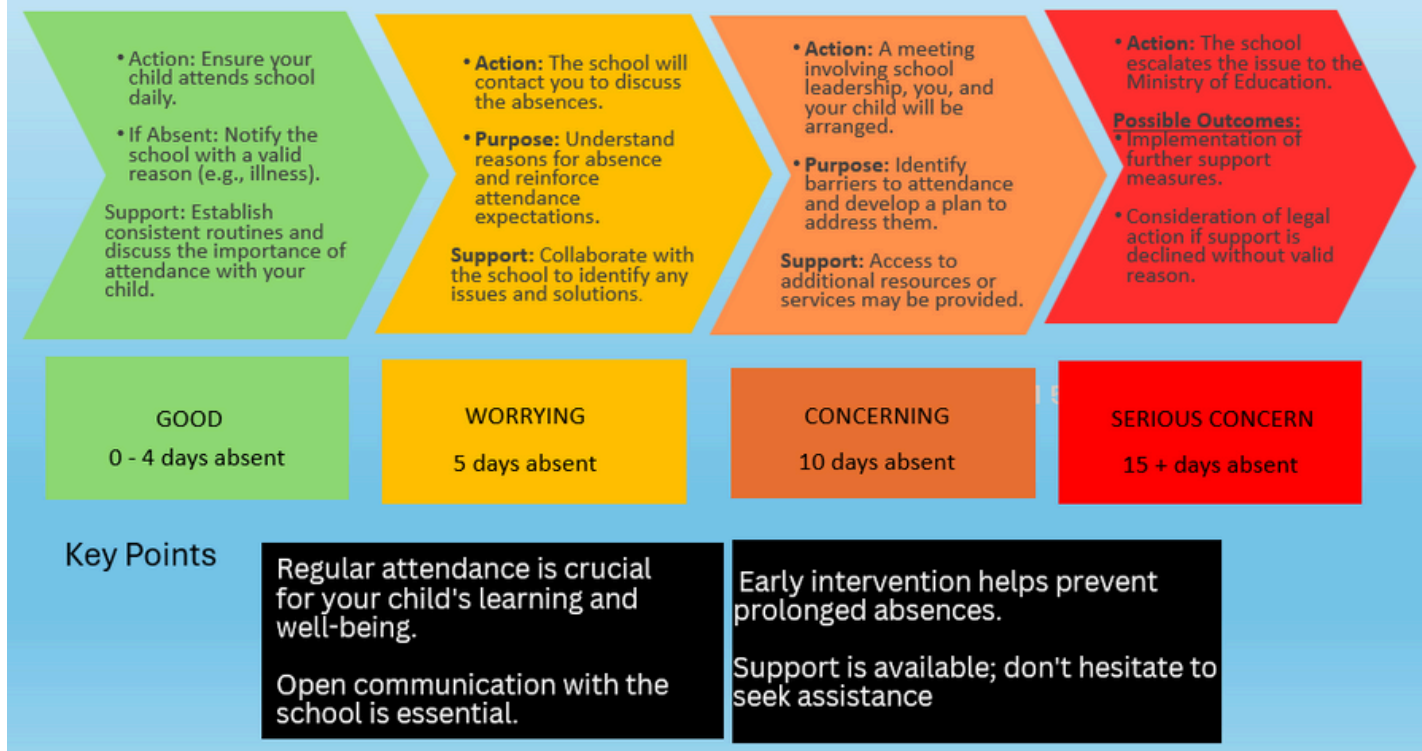


The Parent Portal can be accessed here:

<https://www.education.govt.nz/your-childs-learning>

# St Brigid's School

## Star Attendance for Caregivers



### Importance of School Attendance

Regular school attendance is crucial for your child's learning and development. Consistent attendance helps children stay engaged, build relationships, and make the most of the educational opportunities available to them. If you need support with this, please let us know. We're here to help and can work with you to find solutions.

### School Donations

To help us run our school effectively and provide our children with valuable extra resources and activities we do rely on donation payments. We are not eligible for the Government's school donation scheme, so your contributions are especially important to us. Donations from Terms 2 and 3 help cover the cost of buses and swimming lessons. We appreciate your support.

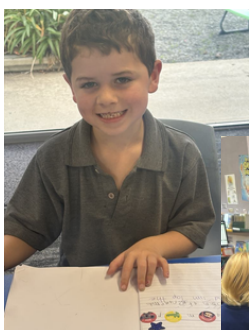
Outstanding accounts have been sent home. please come and see us if you need to set up an automatic payment.

### Reconciliation

We very excited for the children who are currently preparing to receive their First Reconciliation. This is a special milestone in their faith journey, and we warmly invite you to join us in celebrating this occasion on Wednesday, May 22nd at 6pm at Mercy Parish. All Welcome!

### Teacher Professional Learning

Our staff will be involved in a professional learning session with the Ministry focused on Tier two PB4L (Positive Behaviour for Learning) on Monday, 3rd June, starting at 2:00 p.m. If your child will needs care from 2:00 p.m.- 3:00pm on this day Please let the office know so we can make arrangements.





# SAVE THE DATE

## May

- 16th – Pink Shirt Day
- 20<sup>th</sup> – P.T.A meeting 6pm in the Staffroom
- 22nd – Reconciliation, 6:00 p.m. at Mercy Parish
- 23rd – Mass at 10:30 a.m. in the school hall
- 26th – Samoan Language Week begins
- 27th – Pasifika Role Model Day at Trinity, 9:00–11:30 a.m.
- 28th – Catholic Schools Day - Bring something for our Foodbank
- 30th – Teacher Only Day – School is Closed

## June

- 2nd – King's Birthday – School is Closed
- 3<sup>rd</sup> – Teachers Professional Learning PB4L 2-5pm
- 6th – Mass at 10:30 a.m. in the school hall
- 12th – Philippines Independence Day
- 15th – School Mass at Mercy Parish
- 16th – Matariki -Whānau Night, 5:00–6:00 p.m.
- 17<sup>th</sup> – Year 4, 5 and 6 attend Trinity Musical
- 17<sup>th</sup> – P.T.A meeting 6pm in the Staffroom
- 20th – Matariki School is Closed
- 26th – School Reports sent to Whānau
- 27th – End-of-Term Mass at 10:30 a.m.

Stay up to date – follow us on Facebook for updates, reminders, and celebrations.



## Road Safety Heroes.

Please slow down around our schools.  
Keep our children safe.



TRINITY CATHOLIC COLLEGE PRESENTS

BACK TO THE 80's  
...THE TOTALLY AWESOME MUSICAL!

Written by Neil Gooding  
By arrangement with David Spicer Productions  
[www.davidspicer.com.au](http://www.davidspicer.com.au)

16-19 JUNE 2025 | 6.30PM

TRINITY CATHOLIC COLLEGE AUDITORIUM  
(cnr York Place & Tennyson Street)

TICKETS AVAILABLE AT:  
<https://www.theatretickets.co.nz>

## St Brigid's School Raffle

### Please Support our Sponsors

- Cobb and Co Voucher
- Warehouse Stationery
- Kensington
- Anything Automotive
- Office Max Gift Pack
- Aroma Cafe
- Speights Bar
- LUMA Clothing
- Fugue Cafe
- Kumari Valentine Health Pack
- RA Hair and Beauty
- Larnach Castle
- Antidote Pharmacy
- Monarch Wildlife Cruise
- Tuppence Cafe
- Orokonui
- Otago Furniture
- Fantail Tours
- Norwex - Amy Hale
- Inflatable world
- Moana Pool
- Albatross Colony
- Forget me not
- Lonestar